



**SQ ENGINEERING**  
CONTRACTORS (PVT) LTD.

**We Build  
Your Dream**

[sq@sqgallery.com](mailto:sq@sqgallery.com) | [saawariasaji@gmail.com](mailto:saawariasaji@gmail.com)  
[www.sqgallery.com](http://www.sqgallery.com)

# Who We Are

**SQEC Pvt Ltd**, a world class civil engineering and construction company established in 2009 at Cochin, Kerala, India with more than 12 years of experience in a wide range of sectors including construction, instrumentation, sales etc., dealing with clients all over the world.

We are committed to provide each customer with the highest standard of customer service. Highly Professional Engineering solution team, Timely project delivery and high quality materials are used in our projects. With new engineering developments and changes in the field of architecture and construction, the demand for engineering services is on rise.

Our motto is **“We believe in quality not quantity”**. The success story of SQEC continues with a vision of state of art technology, hard work with dedicated and qualified teams having highly professional background, vision and innovative skills...



## PAGE 3

- Civil works
- Road works
- Painting works

## 4

- Archeology and Heritage
- Roofing and fabrication
- Epoxy and 3D flooring

## 5

- Pond- fish pond & geotextile
- Vacuum dewatered flooring
- Landscaping work

## 6

- Paver tile
- Dismantling and demolishing
- Aluminum fabrication

## 7

- River bank protection
- Drainage works
- FRP Door

## 8

- Membrane Water proofing
- Office Interior
- Fencing works

## 9

- Prefabricated steel structures, SS Hand rails
- Cubicle bathroom
- Under Water works

## 10

- Tensile roofing
- Sewage treatment & tank fitting
- Surveying or land surveying

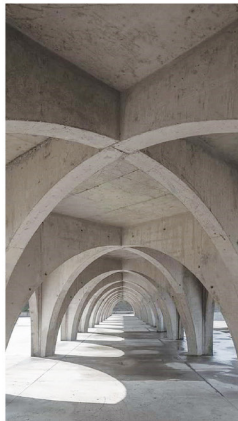
## 11

- Floor Tile & Wooden flooring
- ACP Panel & Glass Partition
- Ceiling work



## Civil works

Excellent and specialized civil works.

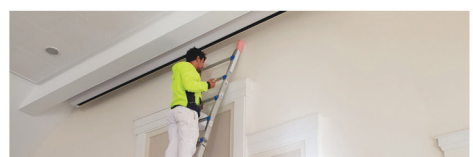
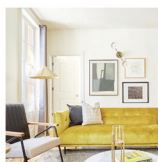


## Road works

All types of road development

## Painting works

Industrial and residential works including high rise buildings.





## Archaeology and Heritage

Archaeological sites and heritages are part of our shared past. Protecting these physical validations of our past using various construction materials.

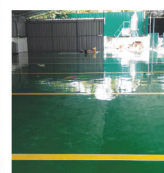


## Roofing and fabrication

New roofing solutions with advanced roofing technology

## Epoxy and 3D flooring

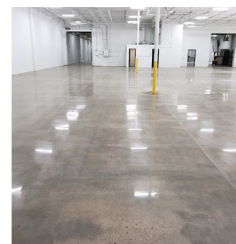
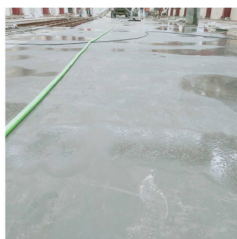
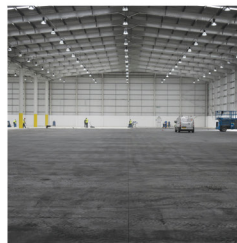
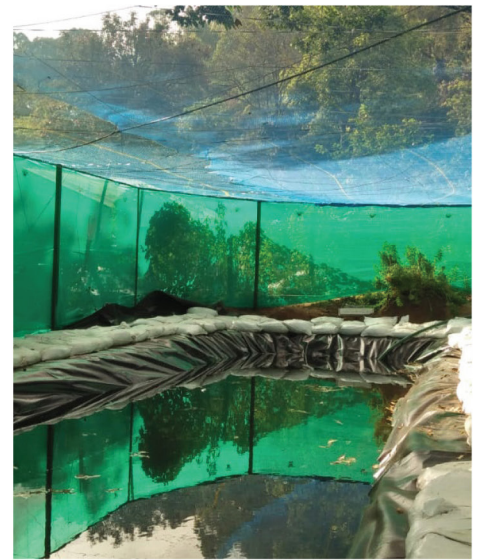
Self levelling epoxy floors in manufacturing buildings, warehouses, showrooms, kitchen, garages with 3D modelling





## Pond fish pond & geotextile

Manufacturer and  
supplier of SQ  
membrane pond liner  
and SQ membrane  
sheet fish water tank.

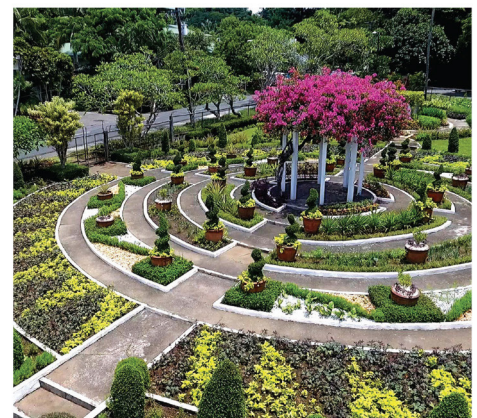
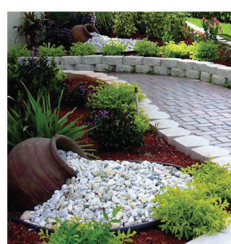
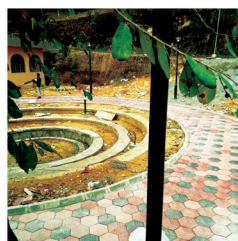
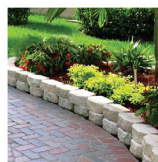


## Vacuum dewatered flooring(VDF)

Special technique to  
do concrete flooring  
to increase the  
compressive strength,  
tensile strength,abrasion  
resistance and to  
minimize shrinkage and  
floor wraps.

## Landscaping work

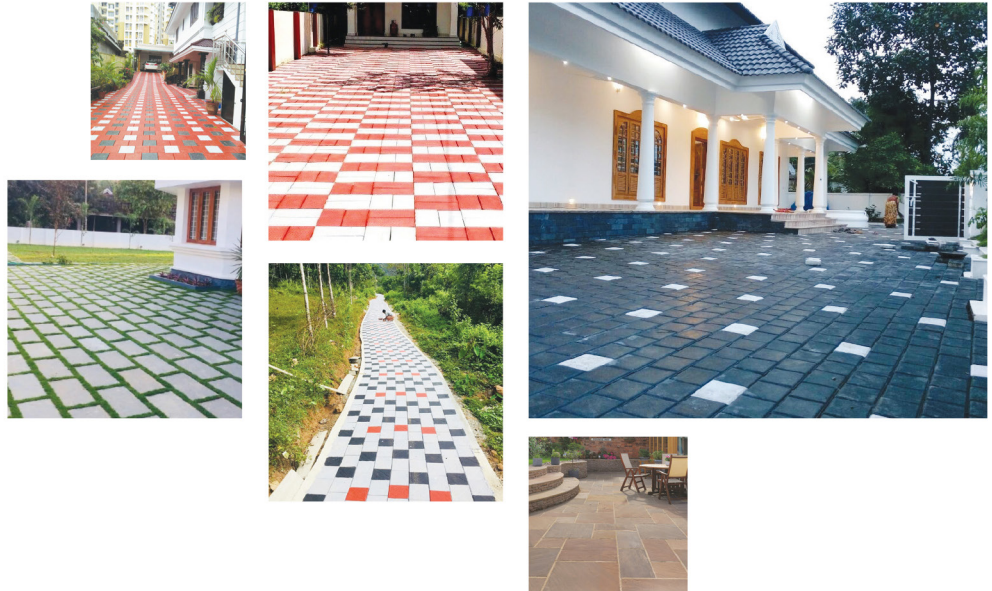
Making of garden or  
other piece of land  
more attractive by  
altering the existing  
design adding  
ornamental features  
& planting trees &  
shrubs.





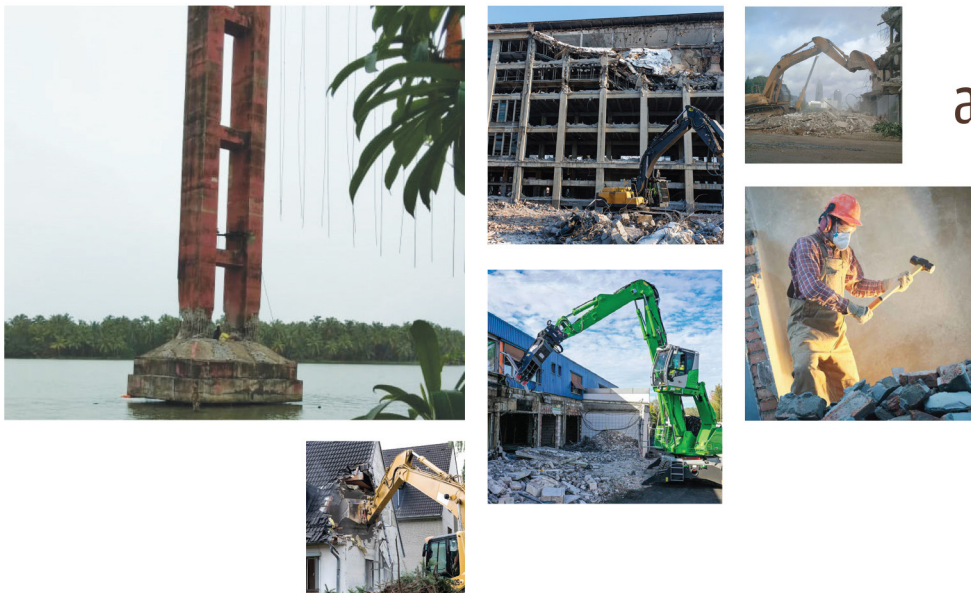
## Paver tile

Used on exterior applications such as drive ways, foot paths, patios, courtyards, landscaping & other outdoor areas.



## Dismantling and demolishing

Demolish & dismantling structures after its life span by pre planning & controlled demolition methods.



## Aluminum fabrication

Providing aluminum frame boards partition work, doors & windows, structure glazing for enhancing the look and feel of establishments & offices.





## River bank protection

Protect the river bank from degradation and strengthening the bank (River bank riprap & retaining wall) using geotextile.

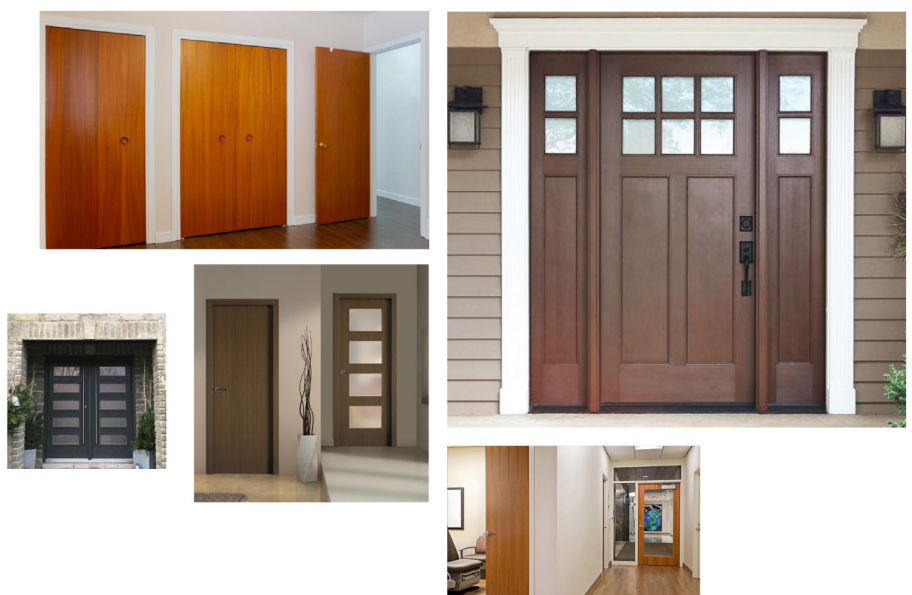


## Drainage works

Set out the plans of roads street gutters, drainages, culverts & sewers involved in construction operations.

## FRP Door (Fiber Reinforced Plastic) door

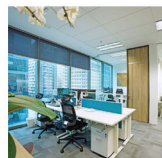
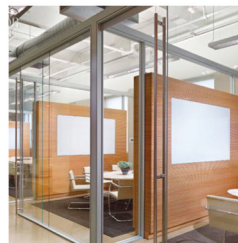
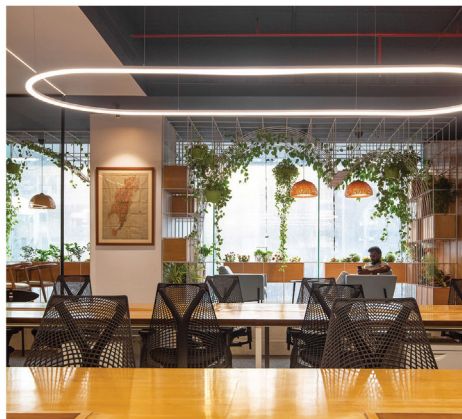
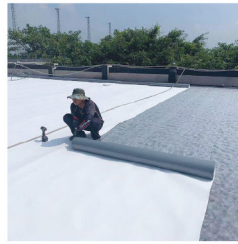
Good substitute for wooden doors & known for its high weather, water rot resistance.





## Membrane Water proofing

Water tight material  
laid above the  
structural slab and  
below the finish tile.

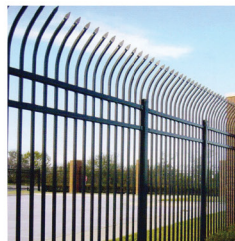
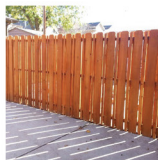


## Office Interior

Various types of  
excellent office interior  
works

## Fencing works

Enclose outdoor  
space without a solid  
foundation along the  
full length.





## Prefabricated steel structures, SS Hand rails

Manufactured in a factory then taken to job site to be assembled these structures contribute in construction speed, engineering quality and environmental problems. SS hand rails are Ideal solutions when a structured railing system is required to define a space or protect a perimeter



## Cubicle bathroom

Equipped with coloured hardware to match your bathroom decor with trusted brand, expert assistance, unmatched warranty and tailored solutions.

## Under Water works

Underwater buildings are structures which are built under the water and each constructing built has a specific motive related to it in keeping with the type of its construction.





## Tensile roofing

Suppliers & distributors of tensile structures. Services are for auditoriums car parking, walkways covering, gazebo in decorating gardens, membrane, modular roof tensile strut.



## Sewage treatment & tank fitting

Waste water treatment plant is a facility in which combination of various processes are used to treat industrial waste water & remove pollutants.



## Surveying or land surveying

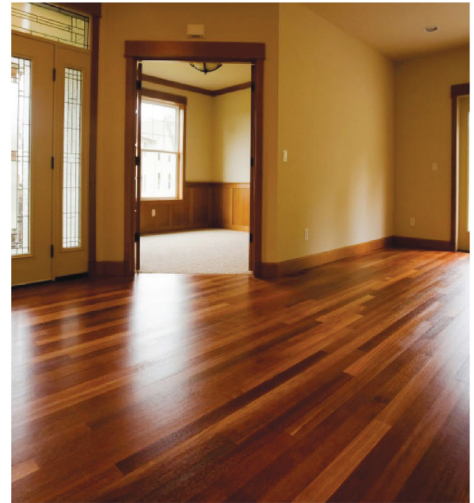
Purpose of the surveying is to detail the features of the site such as direction of fall of the land, trees, existing structures, services, and any other features that may affect the design & placement of the building.





## Floor Tile & Wooden flooring

Each type of tile flooring has its own defining characteristics. Flooring tiles gives aesthetic appearance. Wooden flooring is any product manufactured from timber that is designed for use as flooring, either structural or aesthetic

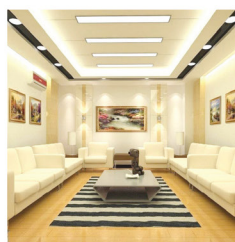
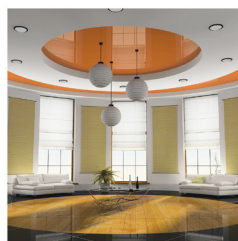
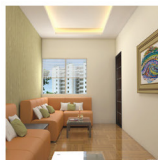


## ACP Panel & Glass Partition

ACP panels are some of the most cost effective cladding materials used to make modern structures more appealing. Glass partition can really open up a room and create spacious, comfortable office areas. Glass dividers create a more open, connected and relaxed ambiance.

## Ceiling work

Ceiling gives a complete look to the room and creates multiple scopes of decorative lighting. A false ceiling hides the plumbing pipes and electrical wires giving the ceiling a clutter free neat and clean look.







**SQ ENGINEERING**  
CONTRACTORS (PVT) LTD.

XI/105-C1, Second Floor, Padamugal, Civil Lane Road, Kakkanad, Ernakulam,  
Kerala, India -682030

email: [sq@sqgallery.com](mailto:sq@sqgallery.com) | [saawariasaji@gmail.com](mailto:saawariasaji@gmail.com)  
+91 484 406 36 30 | +91 92077 36360 | +91 90485 33377  
[www.sqgallery.com](http://www.sqgallery.com)